



# SHINE ENGINEERING

Electrical Engineers & Contractors



- QUALITY
- INNOVATION
- CUSTOMIZATION



**Govt. Licensed Electrical Contractors**

**Licence No.- MC 2 12 31 00031 24092019**

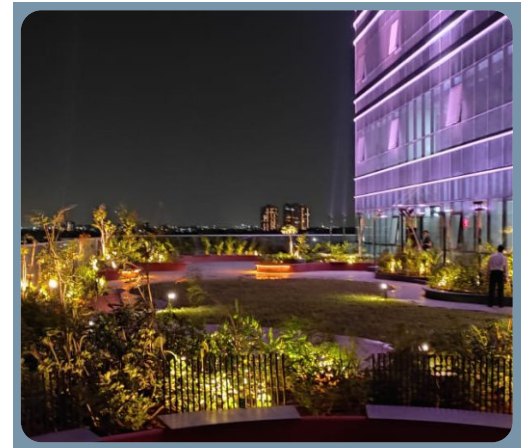
**MSME UDYAM-MH-26-0453494**

## About Us :

Established in 2019, Shine Engineering is a leading provider of turn-key electrification projects, specializing in the planning and implementation of lighting systems and power distribution for a wide range of properties. Our projects cover everything from commercial complexes and residential buildings to factory premises and process plants.

We are committed to delivering a high degree of professionalism and technical expertise on every project. We guarantee strict adherence to schedules and deadlines, ensuring timely completion.

Additionally, our specialized services include securing sanctions for HT load requirements from MSEB and other government authorities. This end-to-end support ensures a seamless and efficient process for our clients.



## Our Vision & Mission



### Vision

To be the leader in the electrical contracting industry in fostering opportunities for all of our employees and their families through growth, training, mentoring, and open communication.



### Mission

Shine Engineering is fully committed to providing our customers with the best possible electrical construction experience while maintaining our core values of safety, teamwork & professionalism.

## Why Choose Shine Engineering?

Choosing Shine Engineering means partnering with a reliable and experienced team dedicated to your project's success. Established in 2019, we have built a reputation for excellence by handling every aspect of your electrification needs with the utmost professionalism and technical expertise.

## Our Strengths:

**Comprehensive Turnkey Solutions:** We manage the entire electrification process, from initial planning and design to final implementation, for commercial, residential, and industrial properties.

**Proven Expertise:** Our dedicated team provides the professional and technical knowledge needed to execute complex projects to the highest standards.

**Timely Execution:** We guarantee strict adherence to schedules, ensuring your project is completed on time.

**Hassle-Free Approvals:** We specialize in securing necessary HT load sanctions from the MSEB and other government bodies.



## Our Services:



### Electrical Works - Industrial, Commercial, Residential

Shine Engineering is a specialist in industrial, commercial, and residential electrical projects. Our expertise includes handling complex power distribution and lighting for factories, designing efficient systems for commercial complexes, and managing all electrical needs for residential buildings, prioritizing reliability, efficiency, and safety.

### Networking Works

We offer comprehensive networking solutions, including the design and installation of robust networks, professional structured cabling, and security and maintenance services. Our expertise also extends to seamlessly integrating various hardware and software components to create a unified, high-performance system.

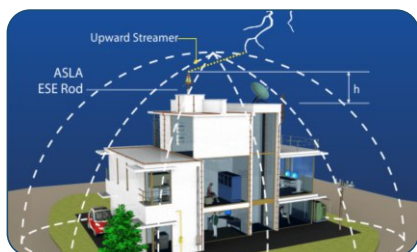
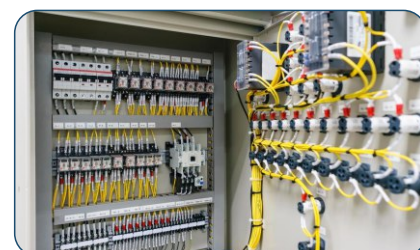


### Electrical Materials Supply

We provide high-quality electrical materials for our projects, including industry-standard wires and cables, a wide range of switches and sockets, and reliable circuit protection devices. Our supply also covers various lighting fixtures and essential components like panels, distribution boards, and other electrical accessories.

### Power/Control Panel Works

We provide expert design, fabrication, and installation of power and control panels, including Power Control Centers (PCCs) and Motor Control Centers (MCCs). Our services also include custom Automation Panels and Automatic Power Factor Correction (APFC) Panels to ensure safety, efficiency, and reliability for your electrical infrastructure.



### Earthing Lightning Arrester

We specialize in installing comprehensive earthing and lightning protection systems to safeguard buildings, equipment, and people. Our services include the design and installation of robust earthing systems to dissipate fault currents and high-quality lightning arresters to safely conduct strikes to the ground, ensuring complete protection.

### Fire & PA System

We specialize in installing integrated Fire & Public Address (PA) Systems to ensure building and occupant safety. Our service includes advanced fire alarm systems for quick detection and effective PA systems for broadcasting clear evacuation messages. We combine these systems for a more reliable, automated response during emergencies.

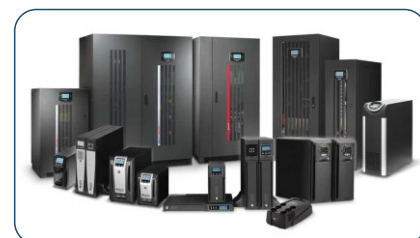


### CCTV System

We provide comprehensive CCTV system services, offering end-to-end solutions for all your video surveillance needs. Our team of experts specializes in the design, installation, and maintenance of customized security systems, ensuring the safety and protection of your property, assets, and people.

### UPS System

We offer comprehensive Uninterruptible Power Supply (UPS) system services, including expert consultation and design to find the right solution for your needs. Our skilled team provides professional installation and ongoing maintenance and support to ensure a reliable power backup that protects your critical equipment and ensures business continuity.



## Interior Works:



### Civil Works

We offer expert civil works as part of our turnkey solutions, providing the essential foundation for any construction project. Our services include foundation and structural work, site preparation, and new building construction and finishing. We also specialize in renovation and repair to enhance the longevity and functionality of existing structures. Our commitment to quality craftsmanship and timely completion ensures that every civil work project is executed with precision and professionalism, providing a strong and reliable base for your infrastructure needs.

### Painting

We offer professional painting services for residential, commercial, and industrial projects. Our expertise includes meticulous interior and exterior painting, using high-quality, durable, and weather-resistant materials. We also specialize in industrial and specialty coatings to protect surfaces from harsh environments, ensuring a flawless and long-lasting finish. Our skilled team handles every step from surface preparation to the final coat, guaranteeing a high-quality result that enhances both the aesthetics and durability of your property. We work efficiently to minimize disruption and deliver a superior finish on time.

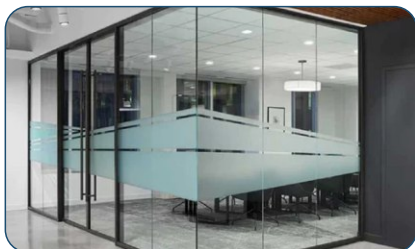
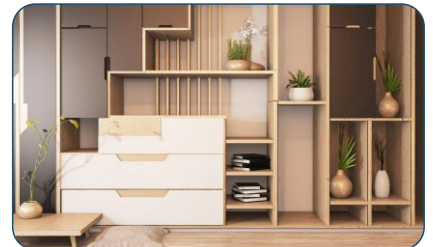


### POP Works

We specialize in professional POP (Plaster of Paris) works, adding aesthetic appeal to residential and commercial spaces. Our services include the design and installation of creative false ceilings, custom wall designs and paneling, and elegant cornices and moulding. We use high-grade POP material to ensure a durable, flawless, and long-lasting finish, executed with meticulous attention to detail by our skilled craftsmen.

### Furniture

We provide professional furniture services for residential and commercial projects. Our services include custom fabrication of bespoke furniture like cabinets and desks, installation of flexible modular systems, and the use of high-quality materials such as wood, laminates, and metal. We also offer renovation and upgrades to refresh existing pieces, ensuring every item is both functional and aesthetically pleasing. Our goal is to create furniture that perfectly suits your functional requirements while enhancing the overall comfort and efficiency of your space.



### Glass Works

We provide expert glass works for various applications, including the design and installation of modern partitions and doors, sleek structural glazing for building facades, and custom decorative glass. We also specialize in elegant glass railings and practical shower enclosures and mirrors, adding a touch of sophistication and functionality to any space. Our skilled craftsmen ensure precise installation and a flawless finish, transforming your interiors with light, style, and a sense of openness.

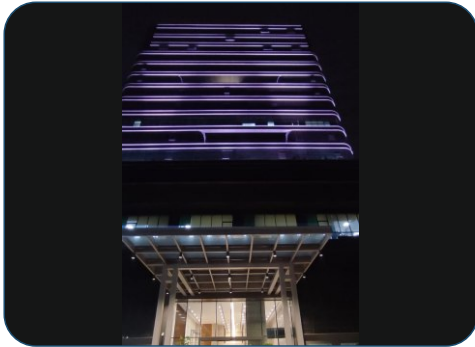
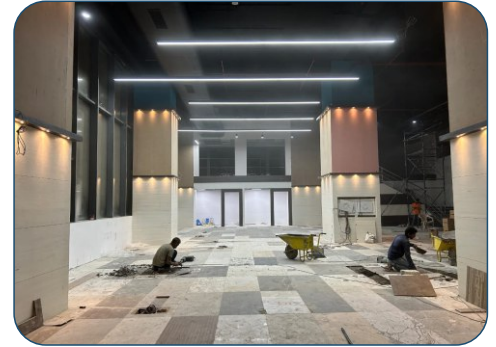
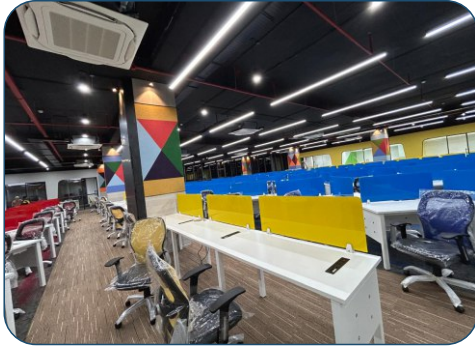
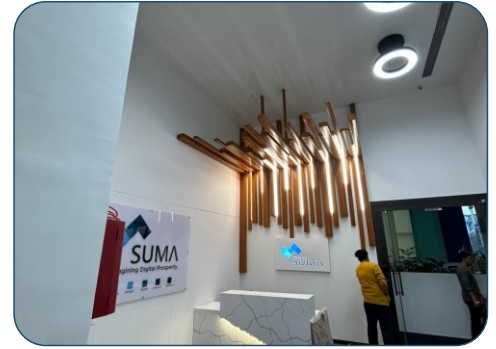
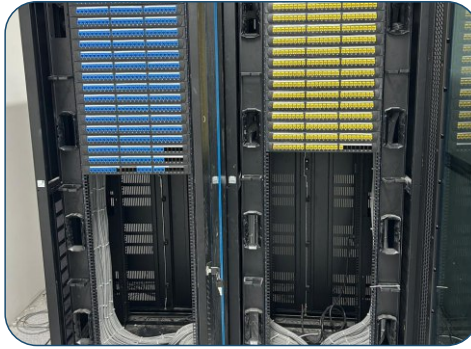
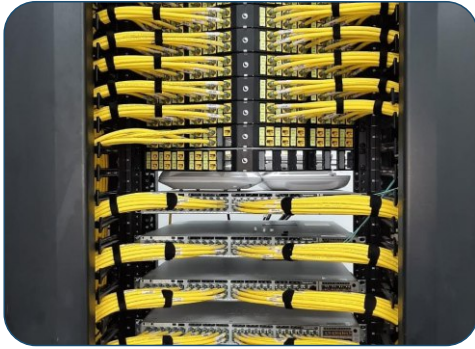
### Manpower Provider

We provide comprehensive manpower solutions from temporary to permanent staffing, handling the entire recruitment process from sourcing to onboarding. With our specialized expertise across various sectors, we can find the right talent for your needs and assist with payroll and compliance to ensure your business runs smoothly. Our commitment to understanding your specific requirements allows us to deliver candidates who not only possess the right skills but also align with your company culture, helping you build a strong and effective team.





## Our Projects:



## Our Clients



## Contact Us

☎ +91 86000 58222 | +91 90222 01553

✉ projects@shineengineering.co.in

✉ shine.engg19@gmail.com

🌐 www.shineengineering.co.in

📍 Sr. No.- 83, Jawalkar Nagar, Pimple Gurav, Pune - 411061.



GST No: 27CFBPB9652P2ZX